

# House & Land Package Lot 120, Thornbill Drive



**\$752,990\***

**392m<sup>2</sup>**  
LOT SIZE

**223m<sup>2</sup>**  
HOUSE SIZE

**4**  
BEDROOM

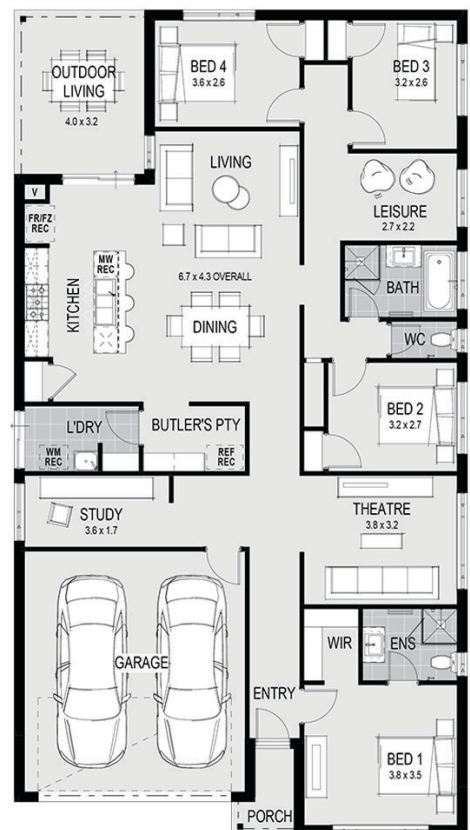
**2**  
BATHROOM

**2**  
CAR PARK

## Paris 25 - Melbourne - Classic

### Package Inclusions:

- Category 1 facade
- Timber laminate flooring & loop pile carpet
- Stone benchtops to kitchen, ensuite and bathroom
- European Design flickmixer tapware
- Rain head showers
- Semi framed shower screens
- Tiled shower bases
- Lever Door Handles
- Double Lock Up Garage with remote control door
- Gas ducted heating throughout
- Fixed site costs
- Classic Kitchen Inclusions
- Huge 1200mm Wide Island Bench with breakfast bar
- Stone Benchtops
- European High Gloss Cabinetry
- Extensive Drawers
- 900mm Westinghouse Freestanding Stove
- 900mm Westinghouse Canopy Rangehood
- Microwave recess with pot drawer
- European style designer 1 & 3/4 bowl stainless steel sink
- Dishwasher recess
- Pull out bin
- Soft closing doors & drawers



**Disclaimer:**  
This document is not a contract and is not binding. Photos, maps, plans, drawings and descriptions are for illustration only, may include computer renders, are not to scale and may differ from final built forms. Actual lots, stages, facilities, amenities, infrastructure and their configuration are subject to statutory approval and may change without notice. All reasonable care has been taken to ensure accuracy however the information published may change from time to time to reflect changing circumstances, laws and regulations and without notice. Your contract of sale will set out all binding terms and relevant property information. Prospective buyers should make and rely on their own enquiries and seek independent legal and financial advice before entering into any binding obligations. To the full extent permitted by law all liability is expressly excluded whether in negligence or otherwise, for any loss or damage in respect of, or arising from, reliance on this document.